

1PIDS80N

DESCRIZIONE Piano cottura Induzione Space Incasso da 80 - 6 zone a induzione Touch Control
DESCRIPTION 80 cm Space Induction built-in hob - 6 Touch Control zones

PESO LORDO 19.4 Kg
GROSS WEIGHT

DIMENSIONI IMBALLO 990x590x130 mm
PACKAGING DIMENSIONS

(A) ALLACCIAMENTO ELETTRICO ELECTRICAL CONNECTION

(B) Zona Sinistra Posteriore (Left-Back side zone): 2.1/3.7 kW

(C) Zona Sinistra Frontale: (Left-Frontal zone) 2.1/3.7 kW

(D) Zona Centrale Posteriore: (Central-Back side zone) 2.1/3.7 kW

(E) Zona Centrale Frontale (Central-Frontal zone): 2.1/3.7 kW

(F) Zona Destra Posteriore (Right-Back side zone): 2.1/3.7 kW

(G) Zona Destra Frontale (Right-Frontal zone): 2.1/3.7 kW

- **Comandi:** Touch Control con multi slider (Touch Control with multi-slider)

- **Funzioni:** Bridge, Booster, riconoscimento automatico delle pentole, pausa, richiamo, programmatore di fine cottura 1-99' cotture automatiche a tre livelli (Function: Bridge, Booster, automatic pan recognition, pause, reminder, cooking end 1-99', automatic cooking on three-level)

- **Dispositivi di sicurezza:** blocco elettronico funzioni per la sicurezza bambini, spia calore residuo allarme traboccamento, spegnimento di sicurezza (Safety devices: electronic child safety block, residual heat indicator, overflow alarm, safety switch-off)

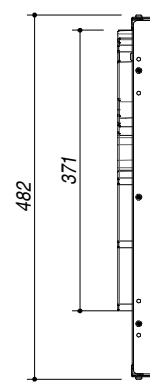
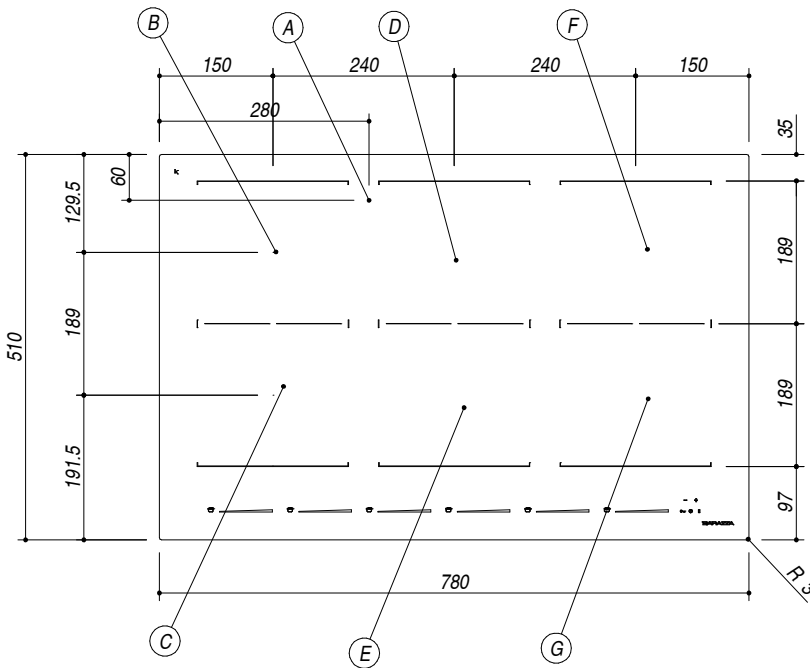
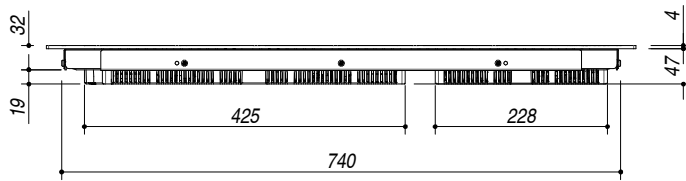
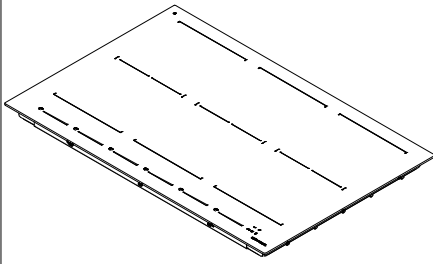
- **Diametro pentola minimo:** Ø 135 mm (Minimum pot diameter: Ø 135 mm)

- **Potenza massima assorbita:** 11.1 kW (Maximum absorbed power: 11.1 kW)

- **Incasso:** 75x49 cm (75x49 cm cut-out)

- **Filotop:** 78.3x51.3 cm (78.3x51.3 cm Flush)

NERO
Black



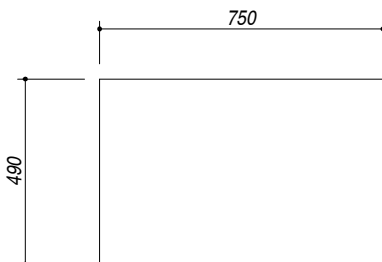
SCALA DISEGNO 1:10
DRAWING SCALE

TUTTE LE MISURE IN mm
ALL MEASURES IN mm

TOLLERANZA LINEARE: ± 0.5 mm
LINEAR TOLERANCE

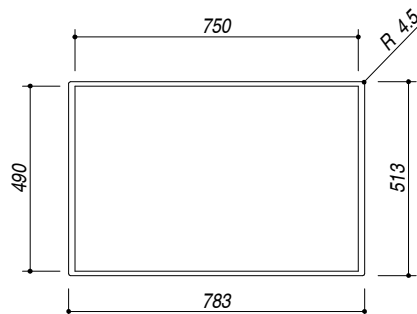
TOLLERANZA ANGOLARE: ± 0.2 °
ANGULAR TOLERANCE

FORATURA PER INSTALLAZIONE AD INCASSO
BUILT-IN CUTOUT FOR TOP



1:20

FORATURA PER INSTALLAZIONE A FILO
FLUSH CUTOUT FOR TOP



ABBASSAMENTO
LOWERING

